

# TRIFOLD SHUTTER CARD TEMPLATES

<http://sandyallnock.com>



Birds eye view of the folds:

Traditional style

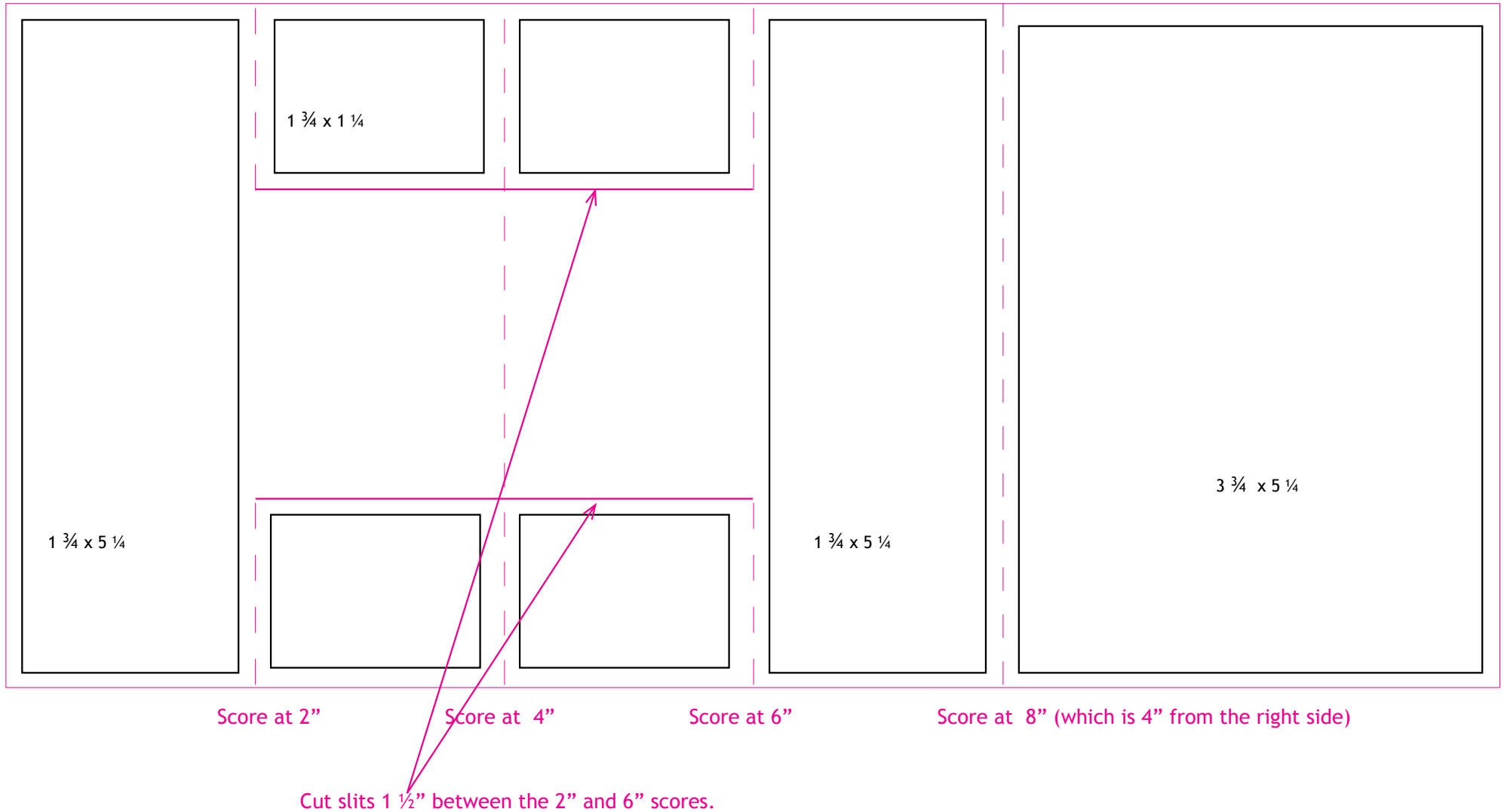


**NEW!**  
With room to write a decent message inside.



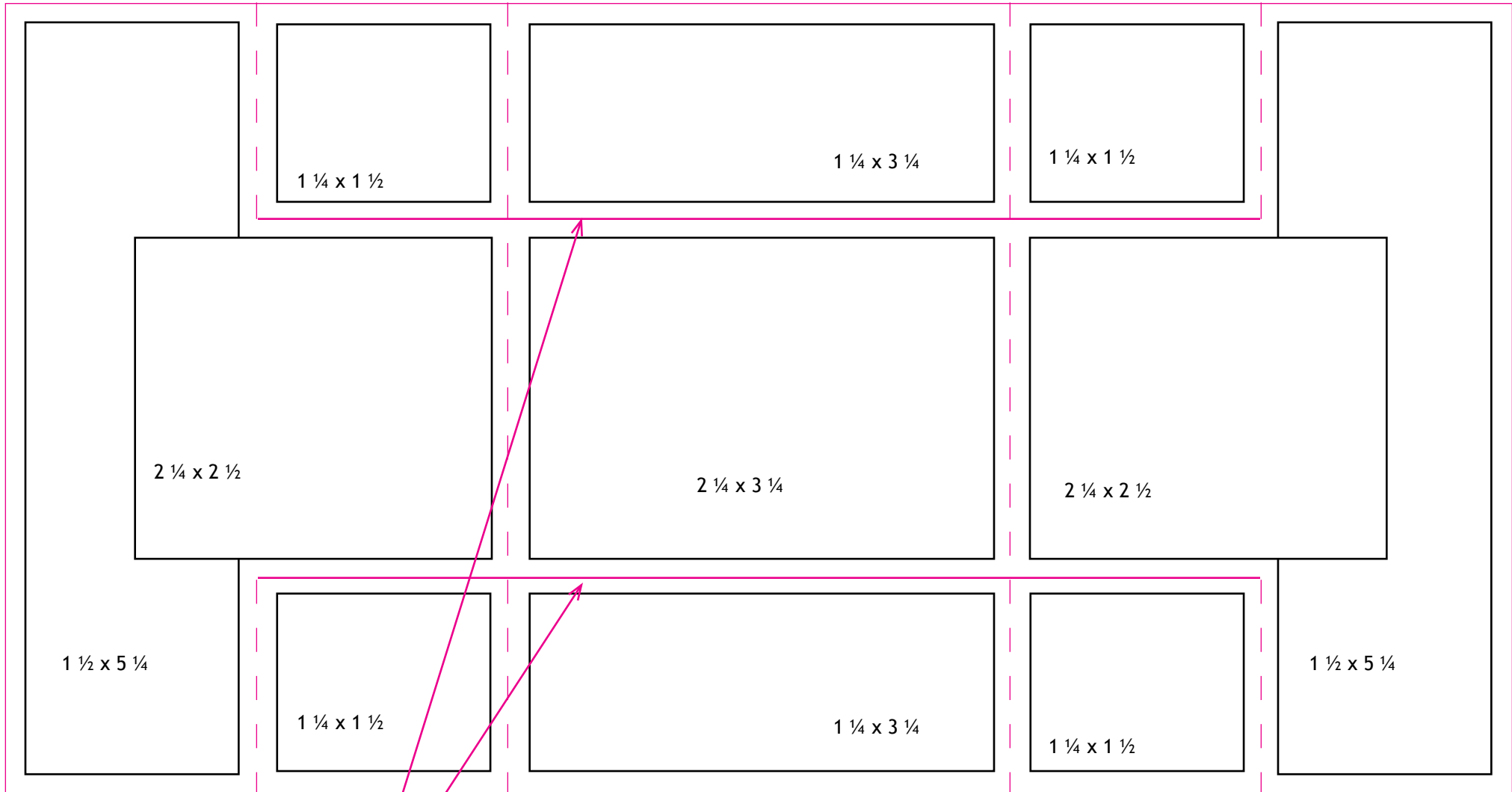
# NEW TRIFOLD SHUTTER CARD

Cut the cardstock 5 ½" x 12". Finished card will be 5½ x 4", slightly smaller than the normal 4¼ inch card. Some suggested measurements are here for designer papers, but feel free to get creative and layer.



# OLD TRIFOLD SHUTTER CARD

Cut the cardstock 5 1/2" x 10 1/2". Finished card is 5 1/2" x 4 1/4"



Score at 1 3/4"

Score at 3 1/2"

Score at 7"

Score at 8 3/4"

Cut slits 1 1/2" from each side between the end scores.